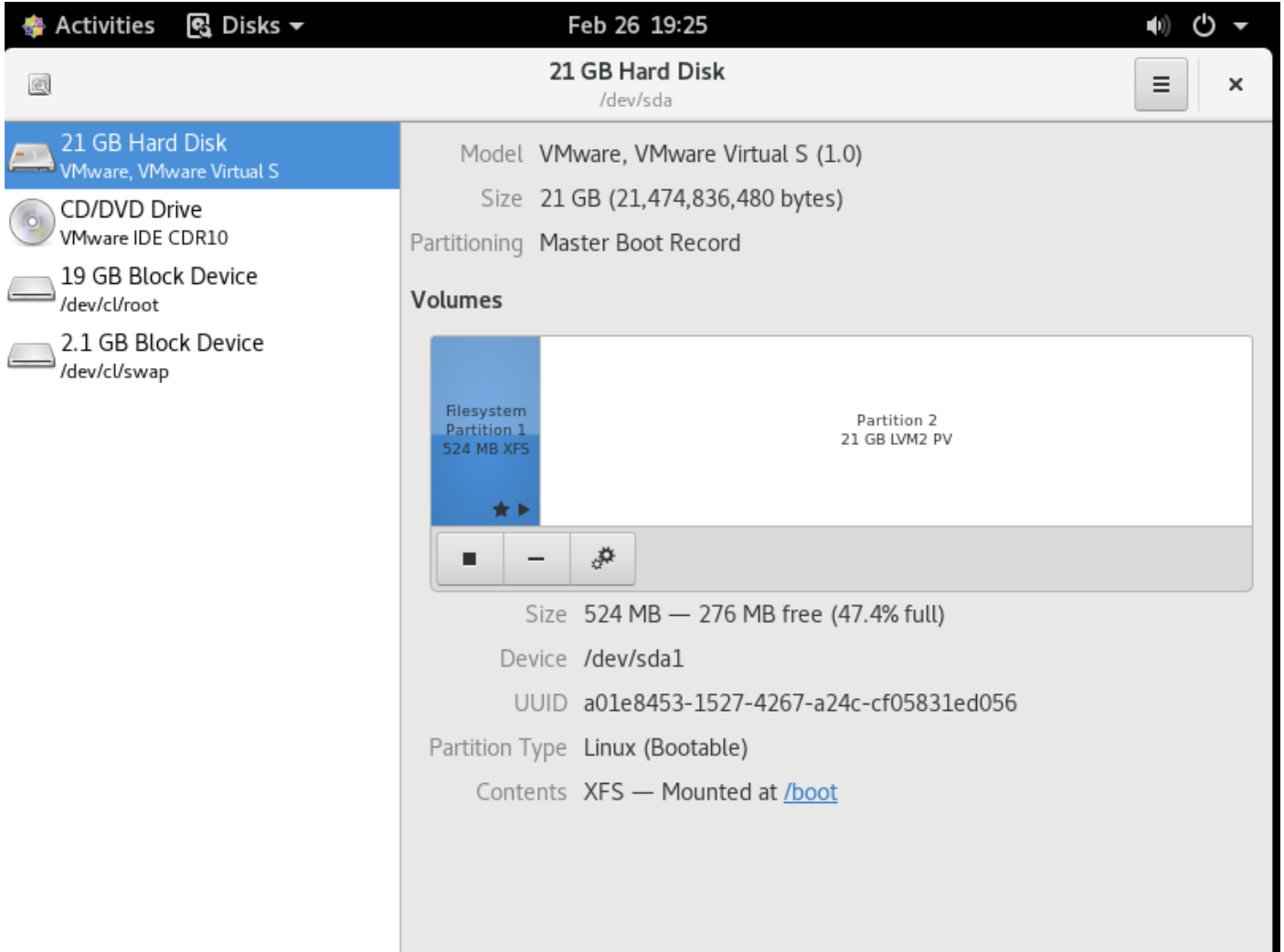


Gparted ile Disk Arttırma

Gparted disk bölümlendirme için yazılmış arayüzdür. Detaylı bilgiye aşağıdan ulaşabilirsiniz.










<https://gparted.org/>

Biz Centos 8 üzerindeki mevcut diskin genişleme işlemini yapacağız. Örnek olarak aşağıdaki ekranda 20 gb disk görülmektedir. Biz bunu gparted ile 40 gb olarak genişleteceğiz.



Sunucumuz VMware ortamında kurulu olduğu için disk kapasitesini genişletiyorum.

Hardware Options

Device	Summary
 Memory	2 GB
 Processors	4
 Hard Disk (SCSI)	20 GB
 CD/DVD (IDE)	Using file C:\Users\Erhan Ayas\...
 Network Adapter	NAT
 USB Controller	Present
 Sound Card	Auto detect
 Printer	Present
 Display	Auto detect

Add...

Remove

Disk file

D:\Lab\centos\New folder\CentOS 7 64-bit.vmdk

Capacity

Current size: 5.1 GB

System free: 437.8 GB

Maximum size: 20 GB

Disk information

Disk space is not preallocated for this hard disk.

Hard disk contents are stored in multiple files.

Disk utilities

Map this virtual machine disk to a local volume.

Map...

Defragment files and consolidate free space.

Defragment

Expand disk capacity.

Expand...

Compact disk to reclaim unused space.

Compact

Advanced...

OK

Cancel

Help

Hardware Options

Device	Summary
Memory	2 GB
Processors	4
Hard Disk (SCSI)	20 GB
CD/DVD (IDE)	Using file C:\Users\Erhan Ayas\...
Network Adapter	NAT
USB Controller	Present
Sound Card	Auto detect
Printer	Present
Display	Automatic

Disk file
D:\Lab\centos\New folder\CentOS 7 64-bit.vmdk

Capacity
Current size: 5.1 GB
System free: 437.8 GB
Maximum size: 20 GB

Disk information
Disk space is not preallocated for this hard disk.
Multiple files.

Expand Disk Capacity

Specify the maximum size for the virtual disk:

Maximum disk size (GB): 40

Expand increases only the size of a virtual disk. Sizes of partitions and file systems are not affected.

Expand Cancel Help

Map...

Defragment

Expand...

Compact

Advanced...

Add... Remove

OK Cancel Help

WWW

Hardware Options

Device	Summary
Memory	2 GB
Processor	4
Hard Disk (SCSI)	40 GB
CD/DVD (IDE)	Using file C:\Users\Erhan Ayas\...
Network Adapter	NAT
USB Controller	Present
Sound Card	Auto detect
Printer	Present
Display	Auto detect

Disk file
D:\Lab\centos\New folder\CentOS 7 64-bit.vmdk

Capacity
Current size: 5.1 GB
System free: 437.8 GB
Maximum size: 40 GB

Disk information
Disk space is not preallocated for this hard disk.
Hard disk contents are stored in multiple files.

Disk utilities
Map this virtual machine disk to a local volume.
Defragment files and consolidate free space.
Expand disk capacity.
Compact disk to reclaim unused space.

Sunucumuzu kapatalım ve aşağıdaki adresten indirmiş olduğumuz gparted uygulamasını sunucumuza mount edelim. Karşımıza çıkan ekranda gparted live ile devam edelim.

<https://gparted.org>

GParted Live (Default settings)

GParted Live (Default settings & To RAM)
GParted Live (VGA with large font & To RAM)
Other modes of GParted Live >
Local operating system in harddrive (if available)
Memory test using Memtest86+

Press [Tab] to edit options

Automatic boot in 26 seconds...

- * Boot menu for BIOS machine
- * GParted live version: 1.3.1-1-amd64. Live version maintainer: Steven Shiao
- * Disclaimer: GParted live comes with ABSOLUTELY NO WARRANTY



GNOME Partition Editor

Herhangi bir deęişiklik yapmadan ok ile devam edelim.

www.erhan.com

Configuring console-data

The keymap records the layout of symbols on the keyboard.

- 'Select keymap from arch list': select one of the predefined keymaps specific for your architecture (recommended for non-USB keyboards);
- 'Don't touch keymap': don't overwrite the keymap in /etc/console, which is maintained manually with install-keymap(8);
- 'Keep kernel keymap': prevent any keymap from being loaded next time the system boots;
- 'Select keymap from full list': list all the predefined keymaps. Recommended when using cross-architecture (often USB) keyboards.

Policy for handling keymaps:

Select keymap from arch list
Don't touch keymap
Keep kernel keymap
Select keymap from full list

<Ok>

<Cancel>

Kurulum dilini seçip devam edelim. Ben 02 ile devam edeceğim.

Select keymap from full list

<Ok>

<Cancel>

Looking for keymap to install:

NONE

Loading language settings:

01: Portuguese (Brazilian)	19: Macedonian
02: British English	20: Norwegian
03: Bulgarian	21: Nepali
04: Catalan	22: Portuguese
05: Czech	23: Punjabi
06: Dutch	24: Russian
07: Finnish	25: Spanish
08: French	26: Simplified Chinese
09: Galician	27: Sloven
10: German	28: Swedish
11: Greek	29: Traditional Chinese (Hong Kong)
12: Hebrew	30: Traditional Chinese (Taiwan)
13: Hungarian	31: Turkish
14: Italian	32: Ukrainian
15: Japan	33: US English
16: Kinyarwanda	34: Vietnamese
17: Lithuanian	35: Polish
18: Latvian	

Which language do you prefer ?

[33] 02

Karşımıza çıkan ekranda 0 seçeneği ile devam edeceğim.

www.eri...

```
03: Bulgarian          21: Nepali
04: Catalan            22: Portuguese
05: Czech              23: Punjabi
06: Dutch              24: Russian
07: Finnish            25: Spanish
08: French             26: Simplified Chinese
09: Galician           27: Sloven
10: German             28: Swedish
11: Greek              29: Traditional Chinese (Hong Kong)
12: Hebrew             30: Traditional Chinese (Taiwan)
13: Hungarian          31: Turkish
14: Italian            32: Ukrainian
15: Japan              33: US English
16: Kinyarwanda        34: Vietnamese
17: Lithuanian         35: Polish
18: Latvian
```

Which language do you prefer ?

[33] 02

Language selected en_GB

Generating en_GB locale by "localedef -f UTF-8 -i en_GB en_GB.UTF-8"... done!

Setting locale in /etc/default/locale...

done!

///NOTE/// Later we will enter graphical environment if you choose '0'. However, if graphical environment (X-window) fails to start, you can:

Run "sudo Forcevideo" to configure it again. Choose 1024x768, 800x600 or 640x480 as your resolution and the driver for your VGA card, etc. Most of the time you can accept the default values if you have no idea about them.

If failing to enter graphical environment, and it does not return to text mode, you can reboot again, and choose '1' here to config X manually.

Which mode do you prefer ?

(0) Continue to start X to use GParted automatically

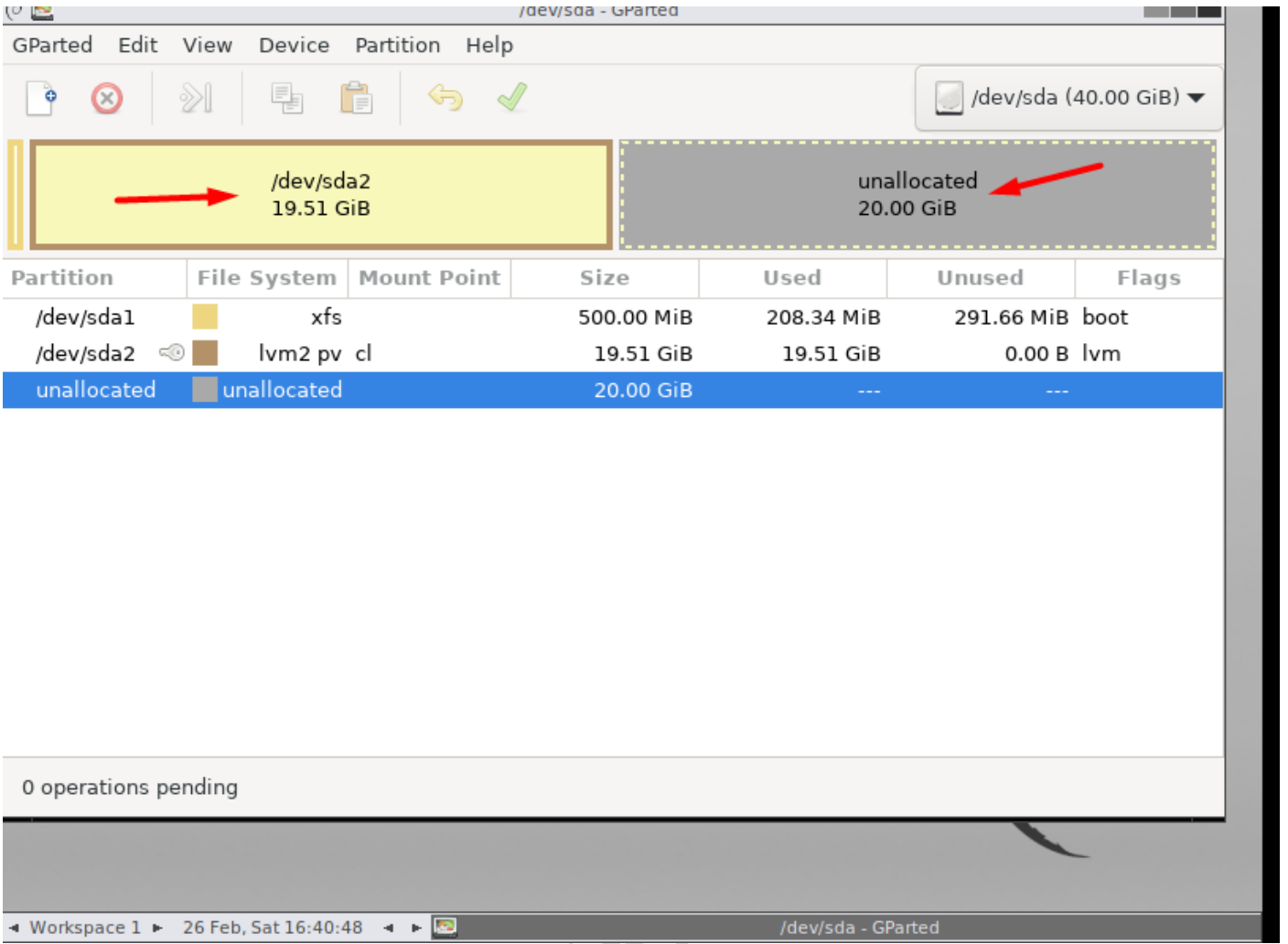
(1) Run 'Forcevideo' to config X manually

(2) Enter command line prompt

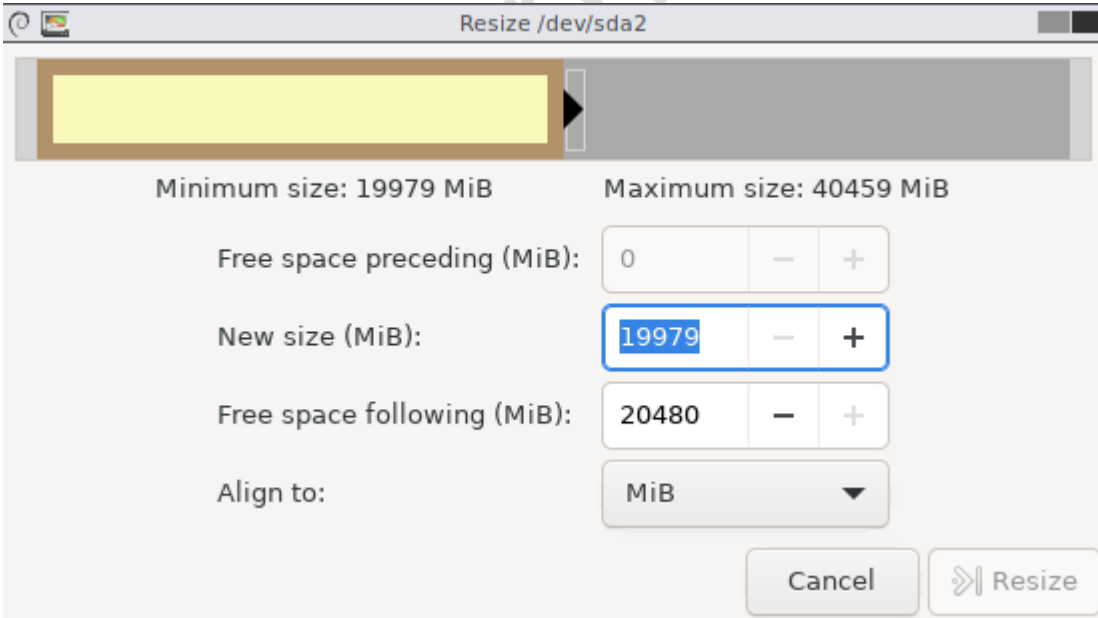
[0] 0

Gparted açıldı ve eklemiş olduğumuz disk görebiliriz.

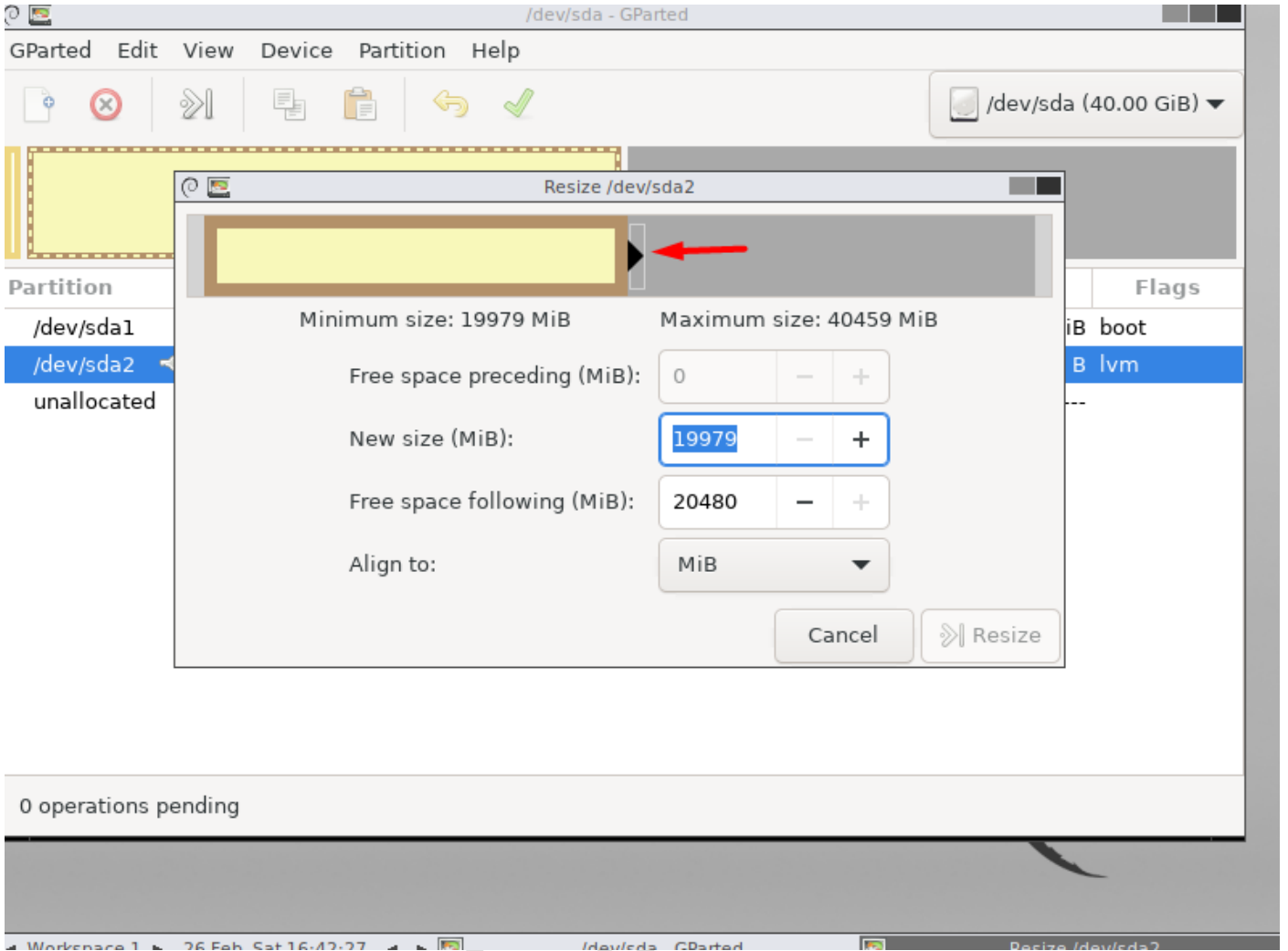
www.erhan.com



Şimdi sistemimiz kurulu olduğu disk üzerinde sağ tıklayıp **resize/move** butonuna basalım.

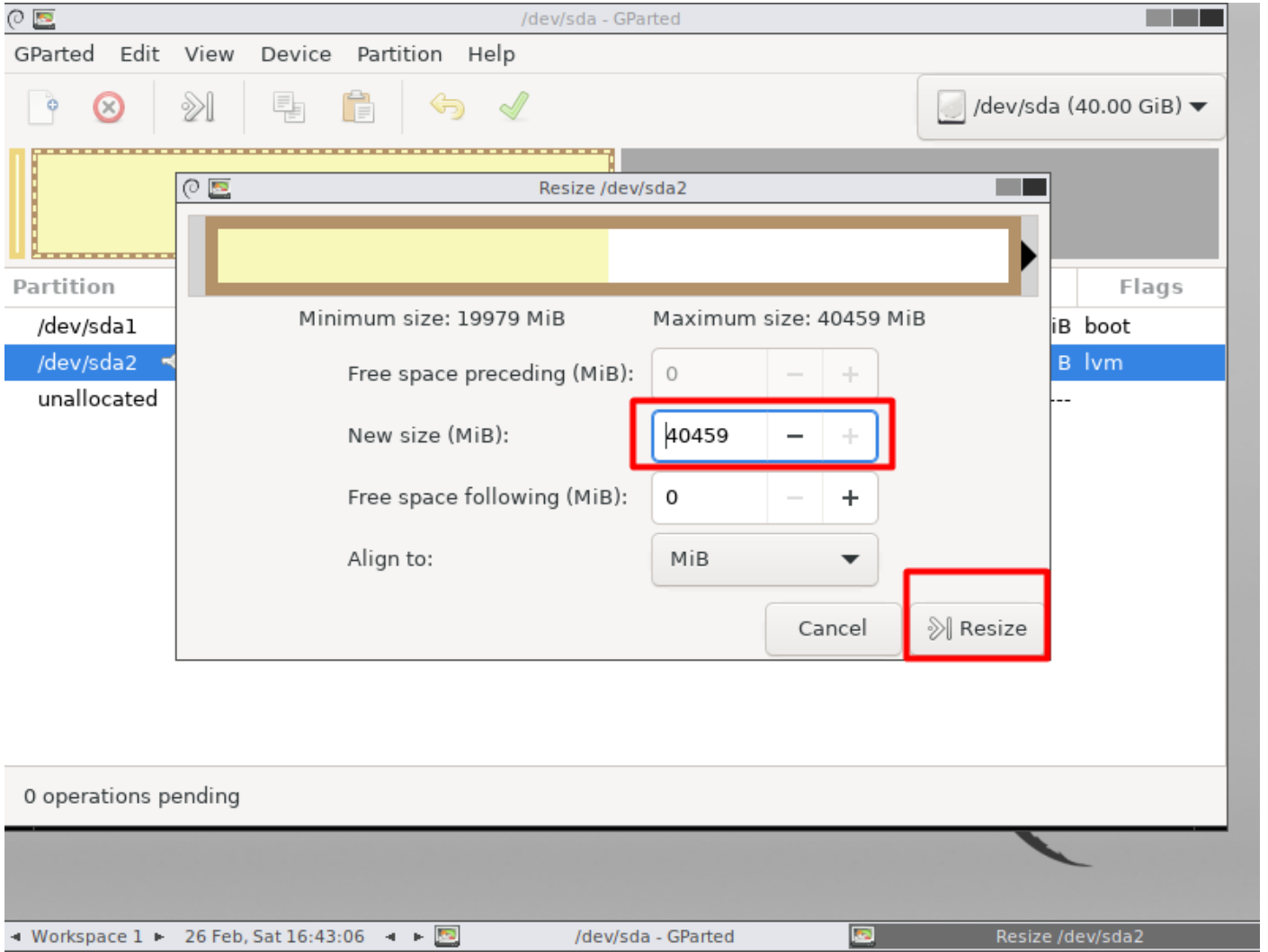


Genişleme işlemini yapalım.



Resize ile işlemi tamamlayalım.

www.erha



Gördüğümüz üzere diskimizi 40 gb alana yükselttik.

www.erkim.com

/dev/sda - GParted

GParted Edit View Device Partition Help

/dev/sda (40.00 GiB)

/dev/sda2
39.51 GiB

Partition	File System	Mount Point	Size	Used	Unused	Flags
/dev/sda1	xfs		500.00 MiB	208.34 MiB	291.66 MiB	boot
/dev/sda2	lvm2 pv cl		39.51 GiB	19.51 GiB	20.00 GiB	lvm

Grow /dev/sda2 from 19.51 GiB to 39.51 GiB

1 operation pending

Workspace 1 26 Feb, Sat 16:43:37 /dev/sda - GParted

Yaptığımız işlemi kaydedelim.

www.erha

GParted Edit View Device Partition Help

/dev/sda (40.00 GiB)

/dev/sda2
39.51 GiB

Partition	File System	Mount Point	Size	Used	Unused	Flags
/dev/sda1	xf		500.00 MiB	208.34 MiB	291.66 MiB	boot
/dev/sda2	lvm2 pv cl		39.51 GiB	19.51 GiB	20.00 GiB	lvm

Grow /dev/sda2 from 19.51 GiB to 39.51 GiB

1 operation pending

Apply ile devam edelim.

GParted Edit View Device Partition Help

/dev/sda (40.00 GiB)

/dev/sda2
39.51 GiB

Partition	File System	Mount Point	Size	Used	Unused	Flags
/dev/sda1	xf		500.00 MiB	208.34 MiB	291.66 MiB	boot
/dev/sda2	lvm2 pv cl		39.51 GiB	19.51 GiB	20.00 GiB	lvm

Apply operations to device

Are you sure you want to apply the pending operations?

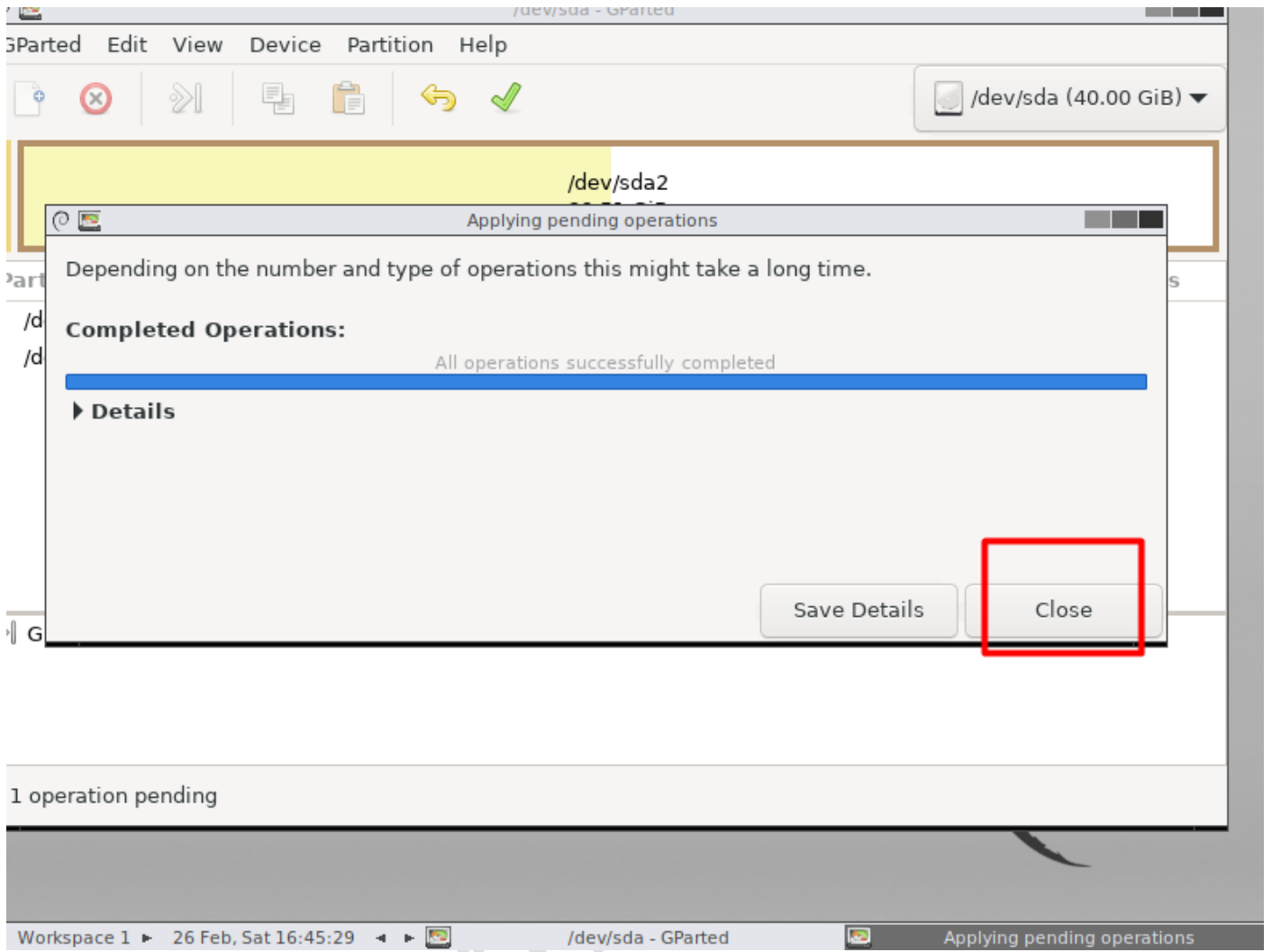
Editing partitions has the potential to cause LOSS of DATA.
You are advised to backup your data before proceeding.

Cancel Apply

Grow /dev/sda2 from 19.51 GiB to 39.51 GiB

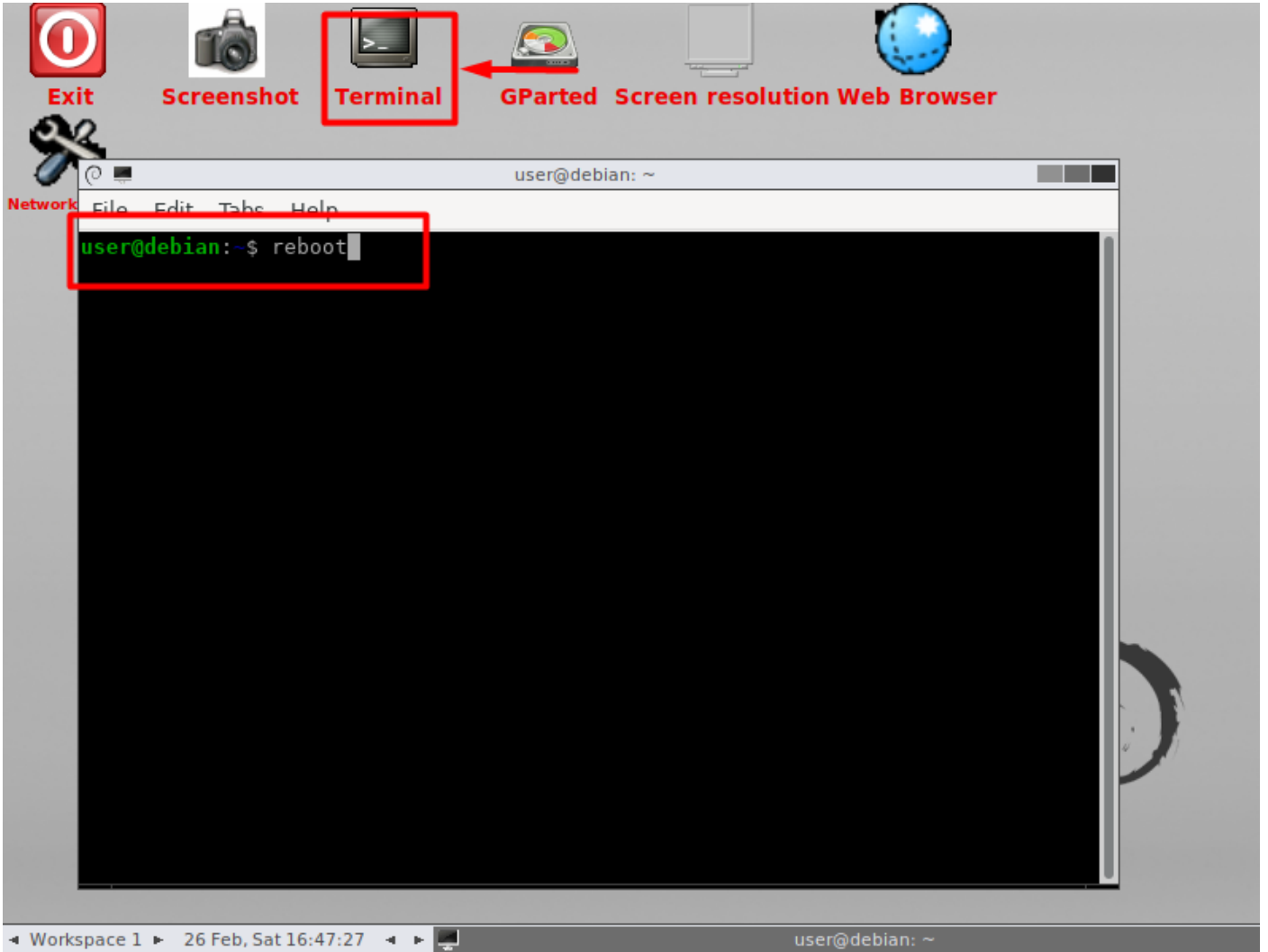
1 operation pending

İşlemimiz tamamlandı.



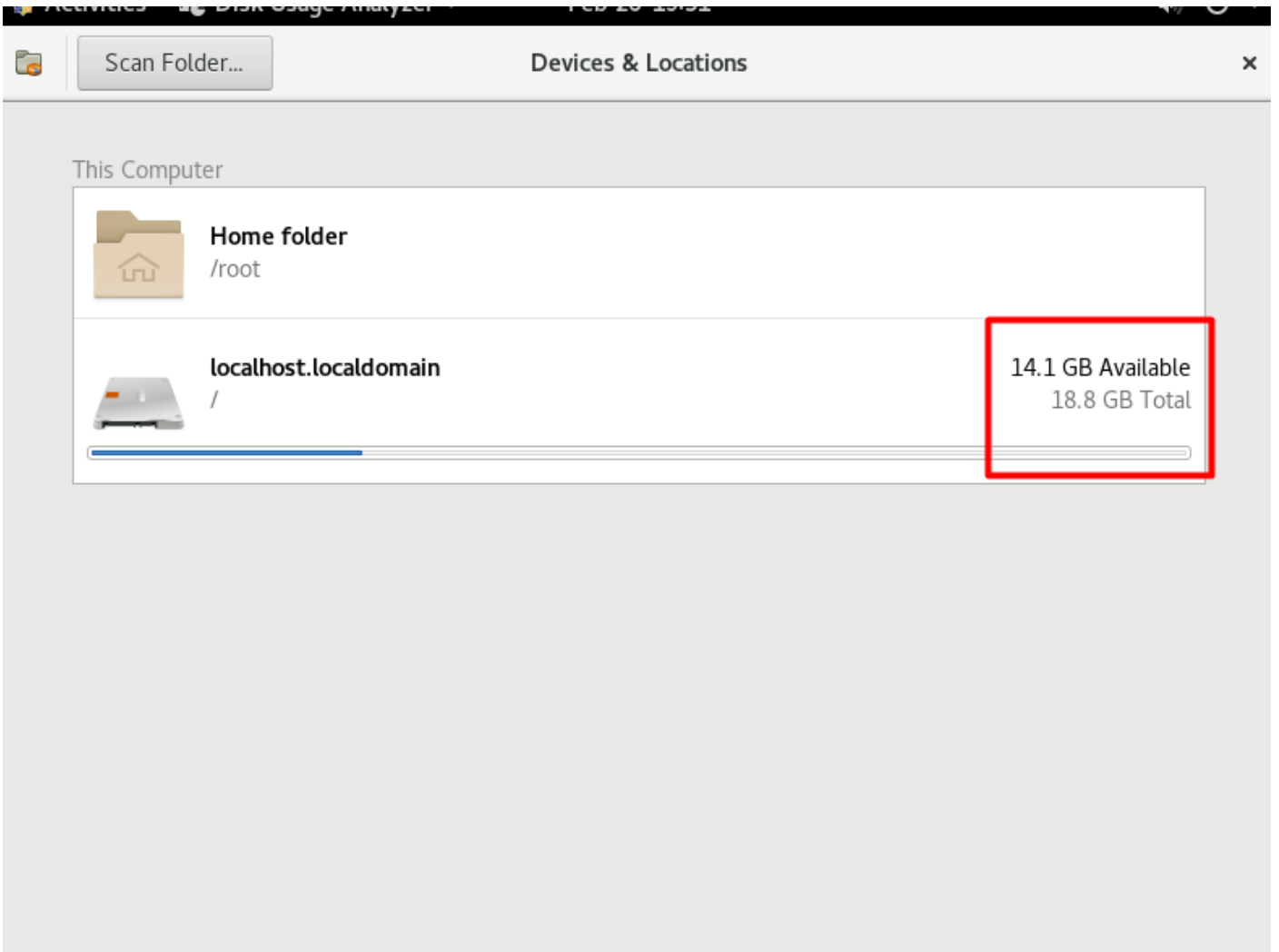
Reboot ederek sistemimizi açalım.

www.eri...



Sistemimiz açtıktan sonra diskimizi kontrol edelim ve hala genişlemediğini göreceğiz.

www.erkim.com



Sunucu üzerine terminali açalım ve ssh ile bağlantı sağlayabilirsiniz.

df -h komutunu çalıştıralım ve dizinimizi kopyalayalım.

www.erkhan.com


```
root@localhost:~  
File Edit View Search Terminal Help  
[root@localhost ~]# df -h  
Filesystem      Size  Used Avail Use% Mounted on  
devtmpfs        866M   0 866M   0% /dev  
tmpfs           896M   0 896M   0% /dev/shm  
tmpfs           896M  9.5M 886M   2% /run  
tmpfs           896M   0 896M   0% /sys/fs/cgroup  
/dev/mapper/cl-root 18G  4.4G  14G  25% /  
/dev/sda1       495M  232M  264M  47% /boot  
tmpfs          180M   5.7M  174M   4% /run/user/0  
[root@localhost ~]#
```

lvextend -l +100%FREE /dev/mapper/cl-root komutunu yazıyorum.

```
root@localhost:~  
File Edit View Search Terminal Help  
[root@localhost ~]# df -h  
Filesystem      Size  Used Avail Use% Mounted on  
devtmpfs        866M   0 866M   0% /dev  
tmpfs           896M   0 896M   0% /dev/shm  
tmpfs           896M  9.5M 886M   2% /run  
tmpfs           896M   0 896M   0% /sys/fs/cgroup  
/dev/mapper/cl-root 18G  4.4G  14G  25% /  
/dev/sda1       495M  232M  264M  47% /boot  
tmpfs          180M   5.7M  174M   4% /run/user/0  
[root@localhost ~]# lvextend -l +100%FREE /dev/mapper/cl-root
```

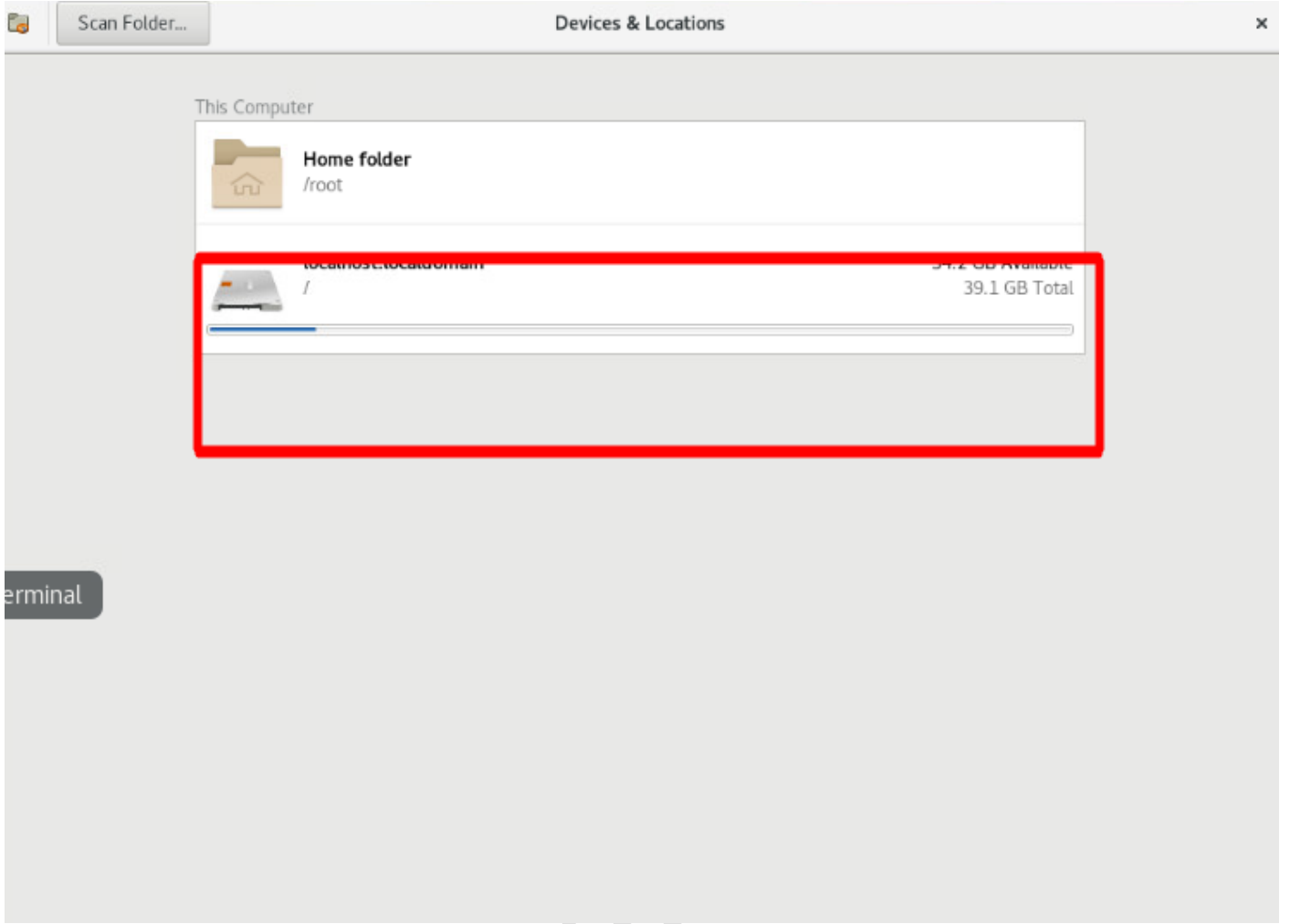
Alanımızın genişlediğini görüyoruz.

```
root@localhost:~  
File Edit View Search Terminal Help  
[root@localhost ~]# df -h  
Filesystem      Size  Used Avail Use% Mounted on  
devtmpfs        866M   0 866M   0% /dev  
tmpfs           896M   0 896M   0% /dev/shm  
tmpfs           896M  9.5M 886M   2% /run  
tmpfs           896M   0 896M   0% /sys/fs/cgroup  
/dev/mapper/cl-root 18G  4.4G  14G  25% /  
/dev/sda1       495M  232M  264M  47% /boot  
tmpfs           180M   5.7M 174M   4% /run/user/0  
[root@localhost ~]# lvextend -l +100%FREE /dev/mapper/cl-root  
Size of logical volume cl/root changed from <17.51 GiB (4482 extents) to <37.51 GiB (9602 extents).  
Logical volume cl/root successfully resized.  
[root@localhost ~]#
```

Şimdi **resize2fs /dev/mapper/cl-root** komutunu çalıştırıyoruz.

```
root@localhost:~  
File Edit View Search Terminal Help  
root@localhost ~]# df -h  
Filesystem      Size  Used Avail Use% Mounted on  
devtmpfs        866M   0 866M   0% /dev  
tmpfs           896M   0 896M   0% /dev/shm  
tmpfs           896M  9.5M 886M   2% /run  
tmpfs           896M   0 896M   0% /sys/fs/cgroup  
/dev/mapper/cl-root 18G  4.4G  14G  25% /  
/dev/sda1       495M  232M  264M  47% /boot  
tmpfs           180M   5.7M 174M   4% /run/user/0  
root@localhost ~]# lvextend -l +100%FREE /dev/mapper/cl-root  
Size of logical volume cl/root changed from <17.51 GiB (4482 extents) to <37.51 GiB (9602 extents).  
Logical volume cl/root successfully resized.  
root@localhost ~]# resize2fs /dev/mapper/cl-root
```

Sunucumuzu yeniden başlattık sonra alanımızın genişlediğini görüyoruz.



Faydalı olması dileğiyle....

www.erhan.com