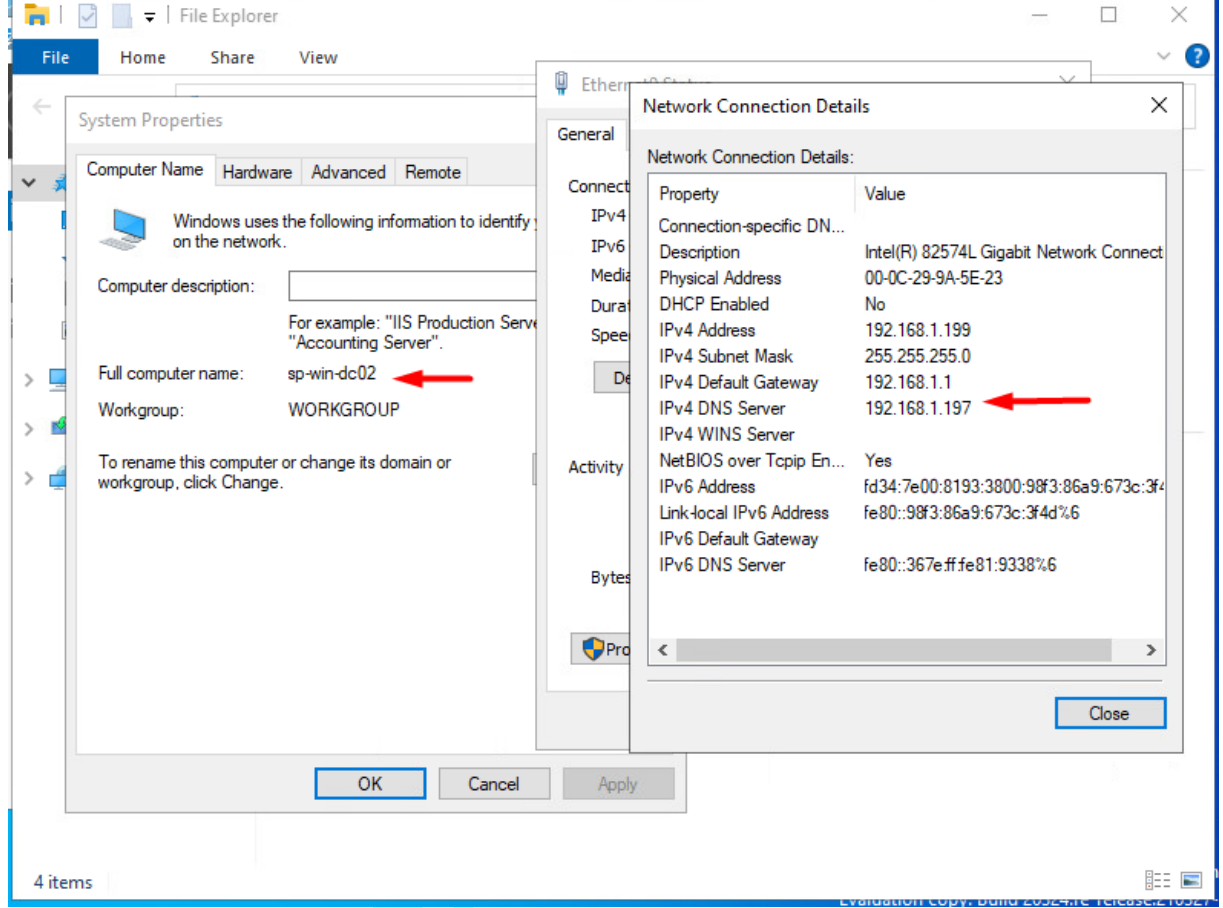


Windows Server 2022 Additional Domain Controller Kurulumu

Bu makalemizde Active Directory yedekliliği için Additional Domain kurulumu yapacağız. Kurulum windows güncellemelerin yapılmış olması, sunucu adı ve ip bilgisi static olarak girilmesi gerekmektedir. Sunucu üzerinde dns adresi active directory sunucusunun ip bilgisi girilmesi gerekmektedir.



Server Manager ekranında bulunan Add Roles and Features butonuna basıyoruz.

WWW.E...

SP-WIN-DC01

Server Manager

Server Manager Dashboard

WELCOME TO SERVER MANAGER

1 Configure this local server

2 Add roles and features

3 Add other servers to manage

4 Create a server group

5 Connect this server to cloud services

QUICK START

WHAT'S NEW

LEARN MORE

ROLES AND SERVER GROUPS

Roles: 1 | Server groups: 1 | Servers total: 1

File and Storage Services 1

Local Server 1

Manageability

Events

Performance

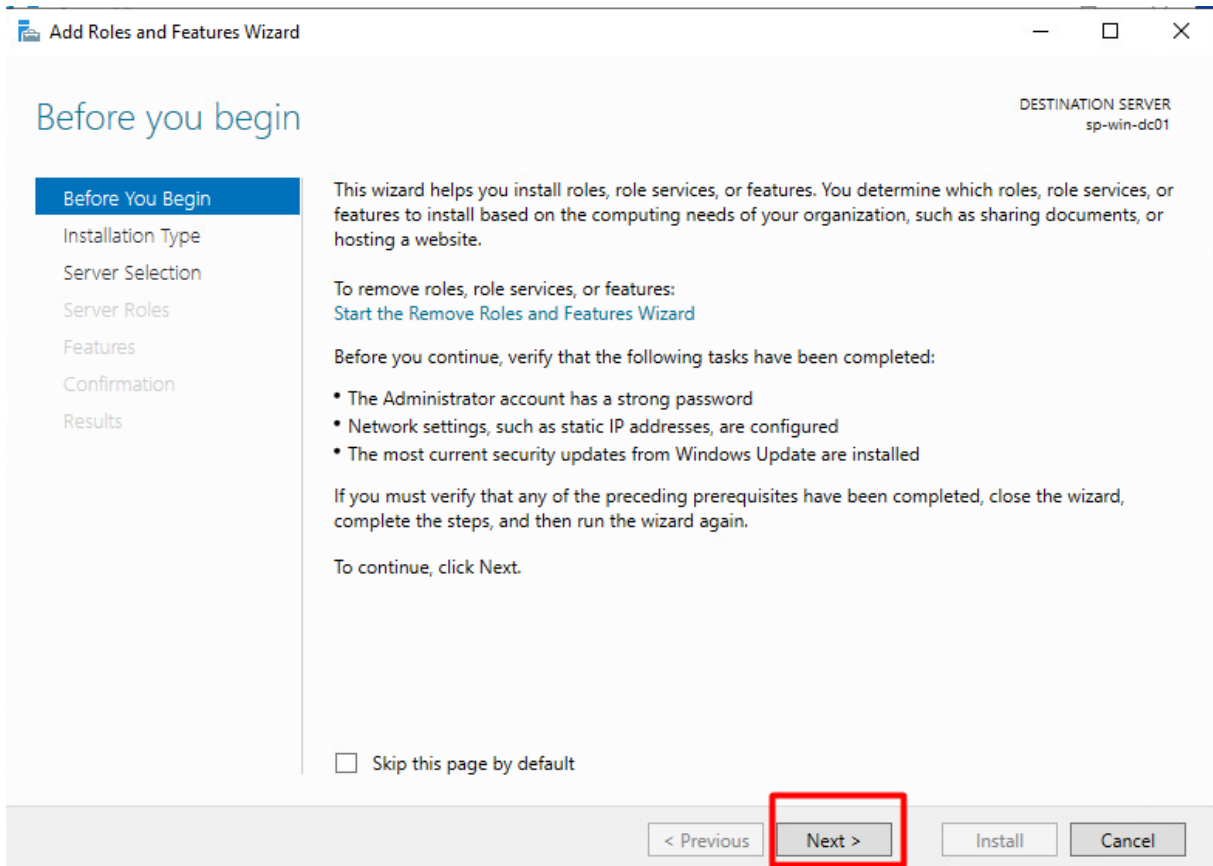
Services

Type here to search

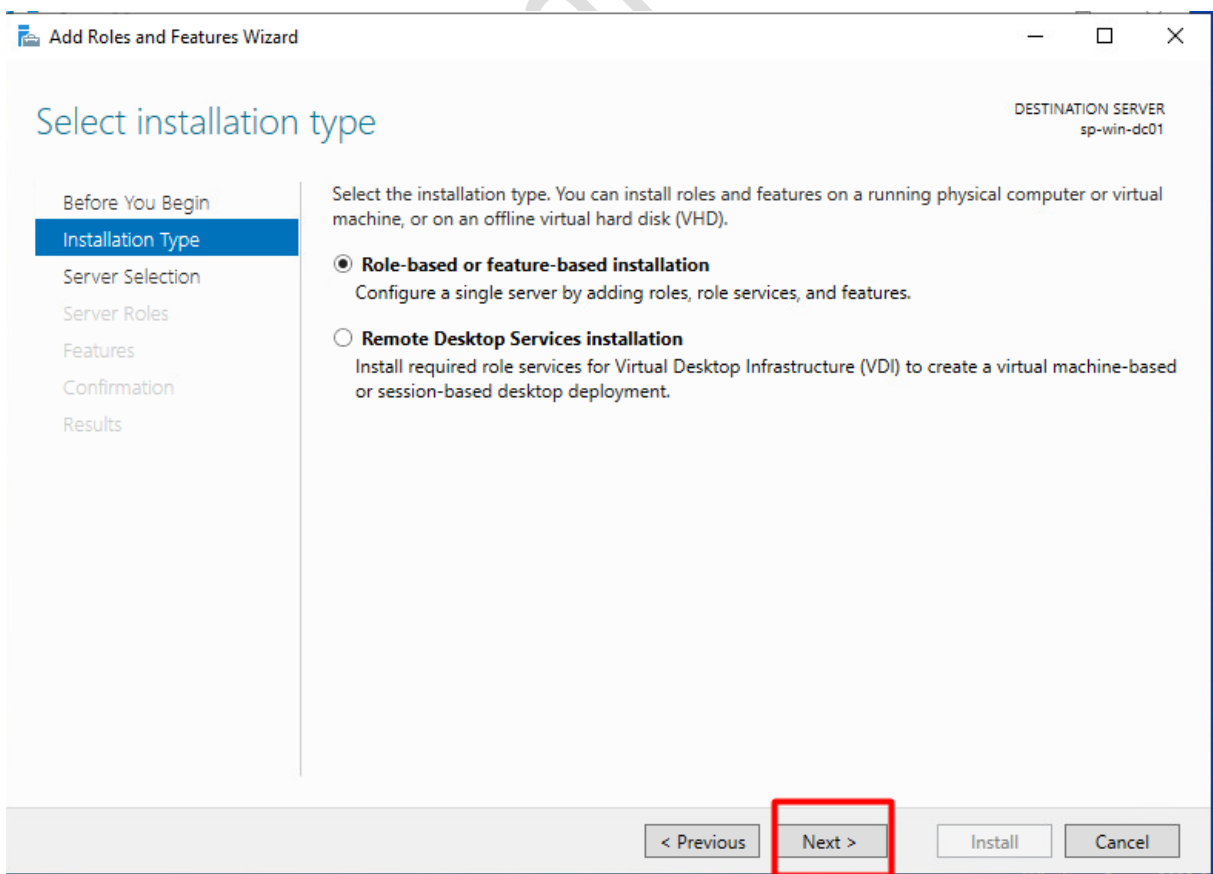
10:33 AM
2/23/2022

Bu ekranda administrator şifresinin güçlü olması – ip ayarlarının static – Windows updatelerin yapılmış olması hakkında bilgi vermektedir. Biz bu işlemleri yaptığımız için next ile devam ediyoruz.

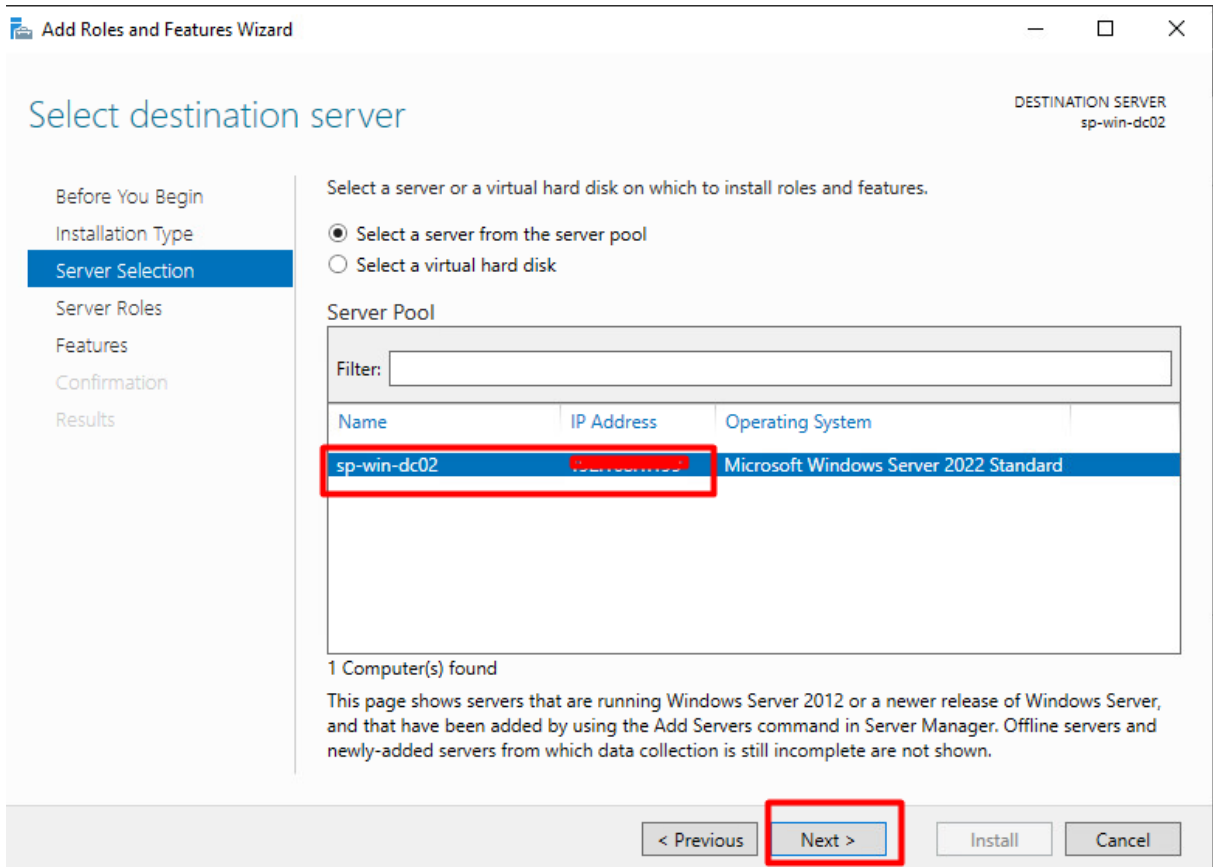
www.elektro.com.tr



Next ile devam ediyoruz.

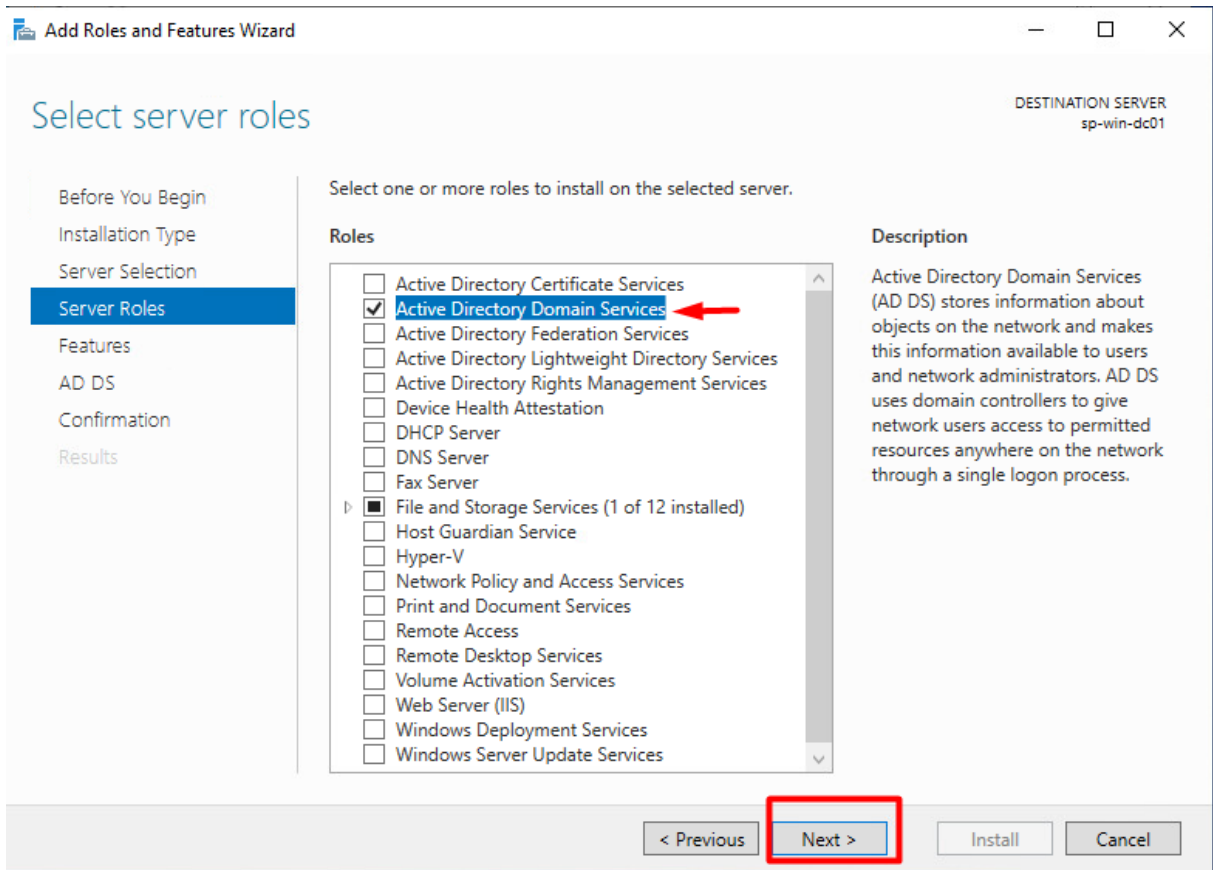


ADC rolünü kuracağımız sunucuyu seçerek next ile devam ediyoruz.

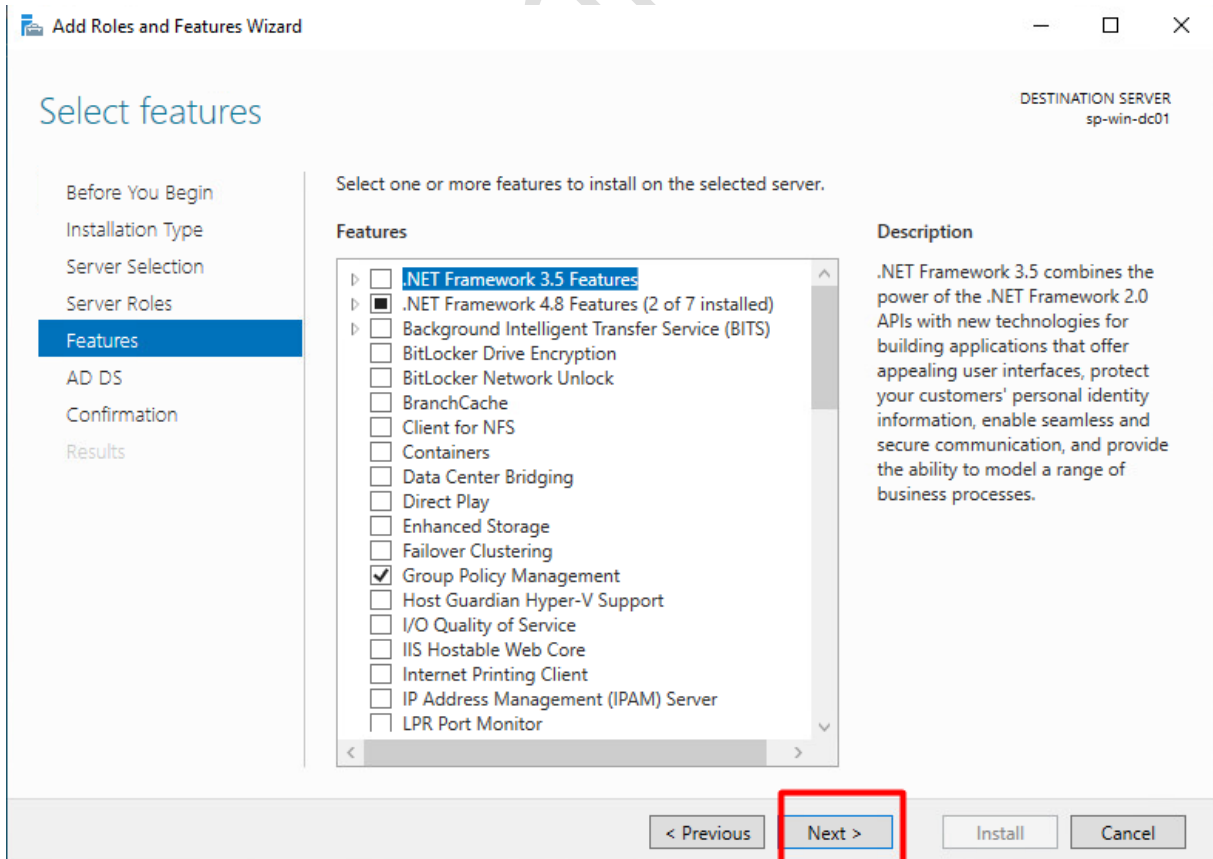


Active Directory Domain Service rolünü seçip next ile devam ediyoruz.

www.erhan.com.tr



Bu ekranda herhangi bir işlem yapmadan next ile devam ediyoruz.



Bu ekranda active directory hakkında bilgi paylaşılmıştır. Next ile devam ediyoruz.

The screenshot shows the 'Active Directory Domain Services' step in the 'Add Roles and Features Wizard'. The left sidebar contains a list of steps: 'Before You Begin', 'Installation Type', 'Server Selection', 'Server Roles', 'Features', 'AD DS' (highlighted), 'Confirmation', and 'Results'. The main content area has the title 'Active Directory Domain Services' and the server name 'DESTINATION SERVER sp-win-dc01'. Below the title, there is a description of AD DS and a 'Things to note' section with two bullet points. A blue diamond icon with a network diagram is followed by text about Azure Active Directory and two links: 'Learn more about Azure Active Directory' and 'Configure Office 365 with Azure Active Directory Connect'. At the bottom, there are four buttons: '< Previous', 'Next >', 'Install', and 'Cancel'.

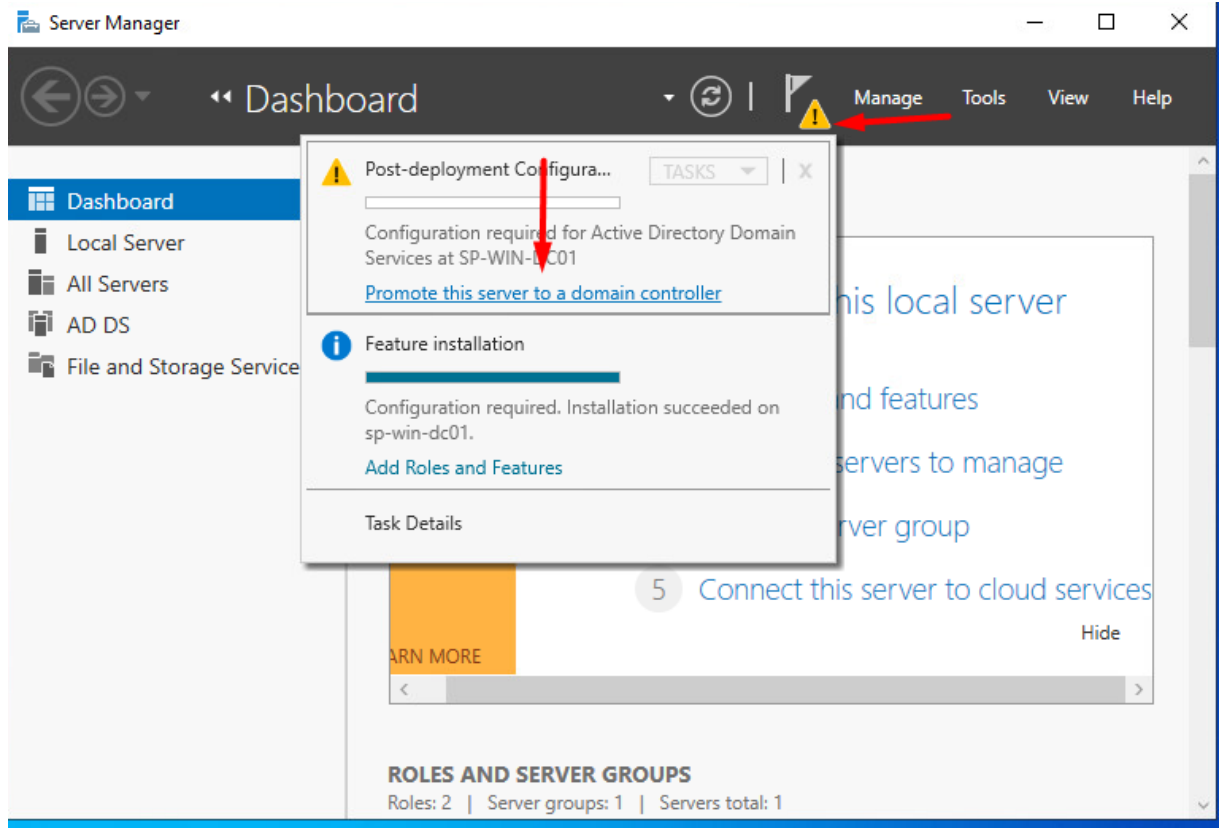
Bu ekranda kurulum için yaptığımız işlemler hakkında bilgi veriyor. Install ile devam ediyoruz.

The screenshot shows the 'Confirm installation selections' step in the 'Add Roles and Features Wizard'. The left sidebar contains a list of steps: 'Before You Begin', 'Installation Type', 'Server Selection', 'Server Roles', 'Features', 'AD DS', 'Confirmation' (highlighted), and 'Results'. The main content area has the title 'Confirm installation selections' and the server name 'DESTINATION SERVER sp-win-dc01'. Below the title, there is a heading 'To install the following roles, role services, or features on selected server, click Install.' followed by a checked checkbox and the text 'Restart the destination server automatically if required'. Below this, there is a list of optional features: 'Group Policy Management', 'Remote Server Administration Tools', 'Role Administration Tools', 'AD DS and AD LDS Tools', 'Active Directory module for Windows PowerShell', 'AD DS Tools', 'Active Directory Administrative Center', and 'AD DS Snap-Ins and Command-Line Tools'. At the bottom, there are four buttons: '< Previous', 'Next >', 'Install' (highlighted with a red box), and 'Cancel'.

Kurulumu başarı ile tamamladık. "Close" butonuna basarak çıkış yapıyoruz.

AD rolünü başarı ile kurduktan sonra şimdi ADC kurma işlemi yapalım.

Dashboard ekranından Promote this server to a domain controller butonuna basalım.



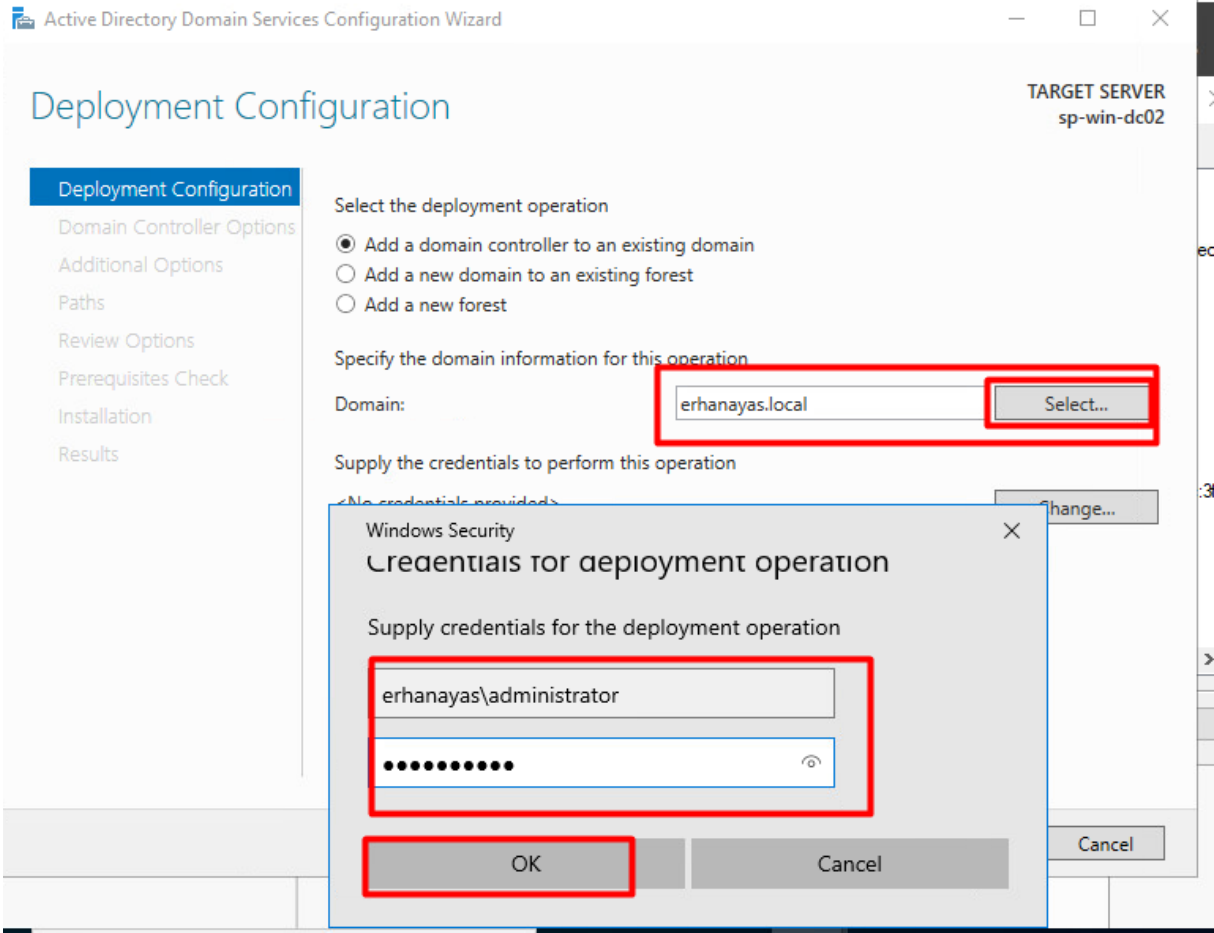
Add a domain controller to an existing domain : Mevcut AD rolü üzerine Additional DC kurulumu gerçekleştirir.

Add a new domain to an existing forest: Mevcut AD üzerine Child Domain kurulumu gerçekleştirir.

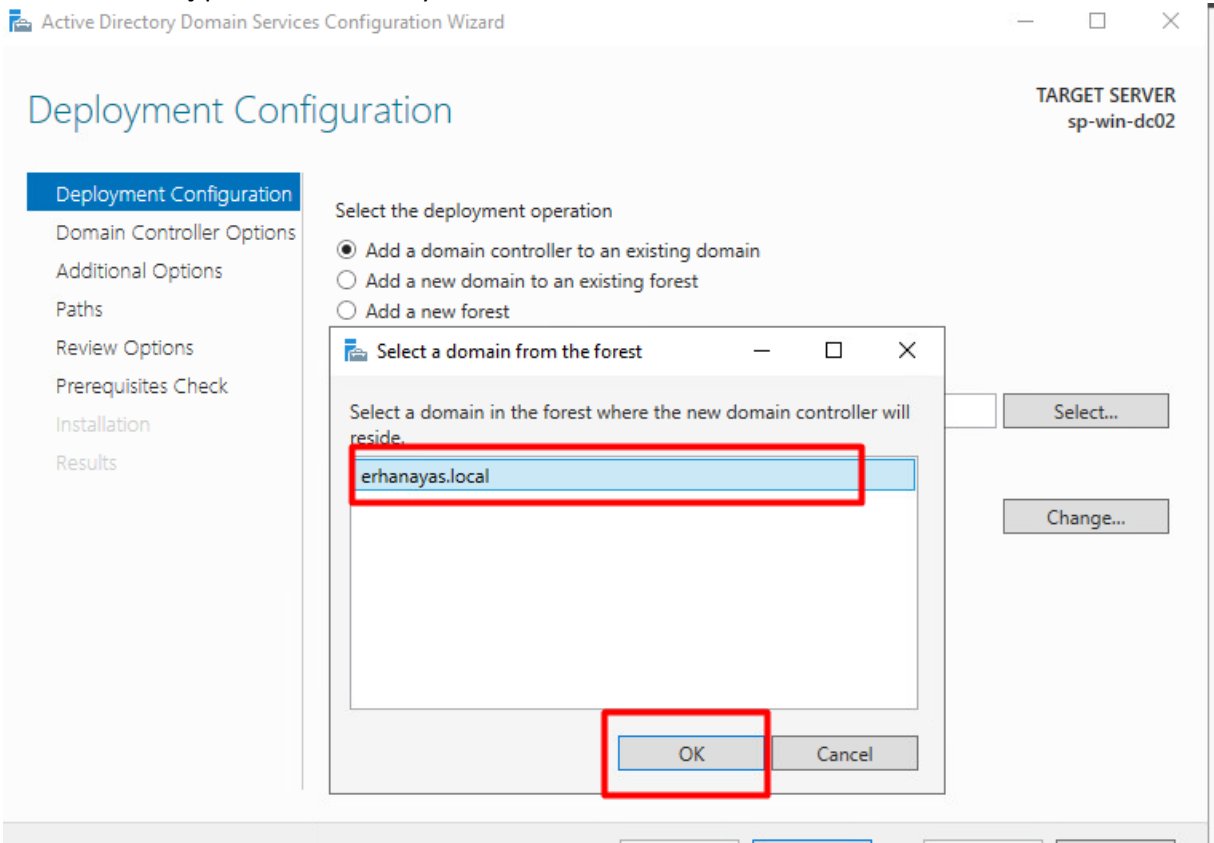
Add a new forest: Yeni bir domain AC yapısı kurulumu yapar.

Biz mevcut Active Directory yapımızın içerisine bir domain eklemek için Add a domain controller to an existing domain seçeneğini ile devam ediyoruz.

Domain adresimizi yazıp select butonuna tıkladığımız kullanıcı adı ve şifre ile giriş yapıyoruz.



Domainimizi seçip ok ile devam ediyoruz.



Next ile devam ediyoruz.

Active Directory Domain Services Configuration Wizard

Deployment Configuration

TARGET SERVER
sp-win-dc02

Deployment Configuration

- Domain Controller Options
- Additional Options
- Paths
- Review Options
- Prerequisites Check
- Installation
- Results

Select the deployment operation

Add a domain controller to an existing domain

Add a new domain to an existing forest

Add a new forest

Specify the domain information for this operation

Domain:

Supply the credentials to perform this operation

SP-WIN-DC02\administrator

[More about deployment configurations](#)

< Previous **Next >** Install Cancel

Bu ekranda yapımızda AD olduğu için DNS ve GC butonları işaretli olarak geliyor. Şifre girerek next ile devam ediyoruz.

www.erhanayas.com

Domain Controller Options

TARGET SERVER
sp-win-dc02

Deployment Configuration

Domain Controller Options

DNS Options

Additional Options

Paths

Review Options

Prerequisites Check

Installation

Results

Specify domain controller capabilities and site information

- Domain Name System (DNS) server
- Global Catalog (GC)
- Read only domain controller (RODC)

Site name:

Type the Directory Services Restore Mode (DSRM) password

Password:

Confirm password:

[More about domain controller options](#)

< Previous

Next >

Install

Cancel

Next ile devam ediyoruz.

www.erhan.com

DNS Options

TARGET SERVER
sp-win-dc02

⚠ A delegation for this DNS server cannot be created because the authoritative parent zone cannot be found... [Show more](#) ×

- Deployment Configuration
- Domain Controller Options
- DNS Options**
- Additional Options
- Paths
- Review Options
- Prerequisites Check
- Installation
- Results

Specify DNS delegation options

 Update DNS delegation[More about DNS delegation](#)

< Previous

Next >

Install

Cancel

Domain adresimizi seçip next ile devam ediyoruz.

www.erhan.com

Additional Options

TARGET SERVER
sp-win-dc02

- Deployment Configuration
- Domain Controller Options
- DNS Options
- Additional Options**
- Paths
- Review Options
- Prerequisites Check
- Installation
- Results

Specify Install From Media (IFM) Options

 Install from media

Specify additional replication options

Replicate from:

- Any domain controller
- Any domain controller
- sp-win-dc01.erhanayas.local**

[More about additional options](#)

< Previous

Next >

Install

Cancel

Bu ekranda ADC yapımızın database, log ve sysvol dizinlerinin nerede oluşturulması gerektiğini belirtiyoruz. Ayarları default olarak bırakıp next ile devam ediyoruz.

www.erhanayas.com

Paths

TARGET SERVER
sp-win-dc02

Specify the location of the AD DS database, log files, and SYSVOL

Database folder:	<input type="text" value="C:\Windows\NTDS"/>	...
Log files folder:	<input type="text" value="C:\Windows\NTDS"/>	...
SYSVOL folder:	<input type="text" value="C:\Windows\SYSVOL"/>	...

[More about Active Directory paths](#)

< Previous **Next >** Install Cancel

Next ile devam ediyoruz.

www.erhan.com

Review Options

TARGET SERVER
sp-win-dc02

- Deployment Configuration
- Domain Controller Options
 - DNS Options
- Additional Options
- Paths
- Review Options**
- Prerequisites Check
- Installation
- Results

Review your selections:

Configure this server as an additional Active Directory domain controller for the domain "erhanayas.local".

Site Name: Default-First-Site-Name

Additional Options:

Read-only domain controller: No

Global catalog: Yes

DNS Server: Yes

Update DNS Delegation: No

Source DC: sp-win-dc01.erhanayas.local

These settings can be exported to a Windows PowerShell script to automate additional installations

[View script](#)[More about installation options](#)

< Previous

Next >

Install

Cancel

Install ile ADC kurulumunu başlatıyoruz.

www.erhanayas.com

Prerequisites Check

TARGET SERVER
sp-win-dc02

✓ All prerequisite checks passed successfully. Click 'Install' to begin installation.

[Show more](#) ×

- Deployment Configuration
- Domain Controller Options
 - DNS Options
- Additional Options
- Paths
- Review Options
- Prerequisites Check**
- Installation
- Results

Prerequisites need to be validated before Active Directory Domain Services is installed on this computer

[Rerun prerequisites check](#)[View results](#)

⚠ Windows Server 2022 domain controllers have a default for the security setting named "Allow cryptography algorithms compatible with Windows NT 4.0" that prevents weaker cryptography algorithms when establishing security channel sessions.

For more information about this setting, see Knowledge Base article 942564 (<http://go.microsoft.com/fwlink/?LinkId=104751>).

⚠ A delegation for this DNS server cannot be created because the authoritative parent zone cannot be found or it does not run Windows DNS server. If you are integrating with an existing DNS infrastructure, you should manually create a delegation to this DNS server in the parent zone to ensure reliable name resolution from outside the domain "erhanayas.local". Otherwise, no action is required.

⚠ If you click Install, the server automatically reboots at the end of the promotion operation.

[More about prerequisites](#)

< Previous

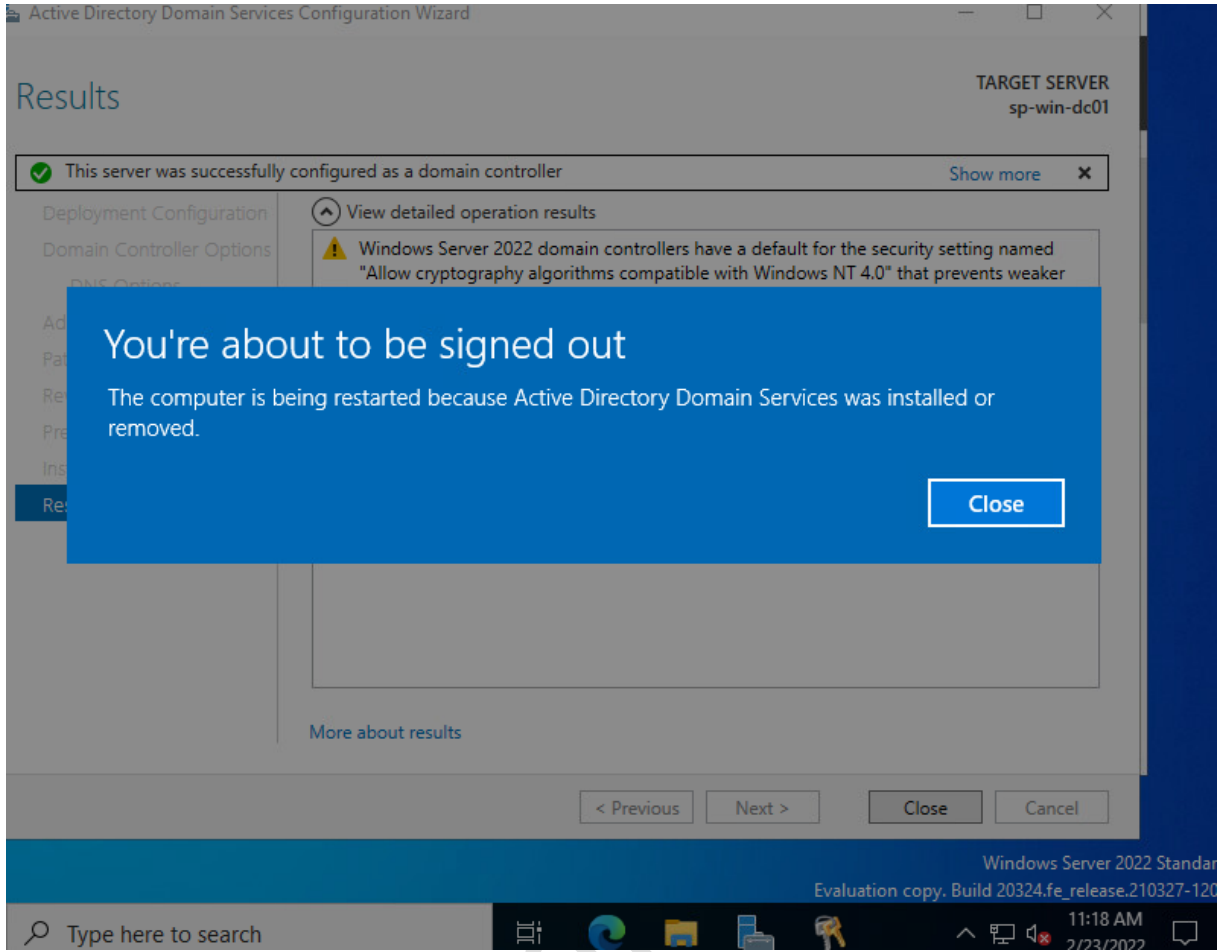
Next >

Install

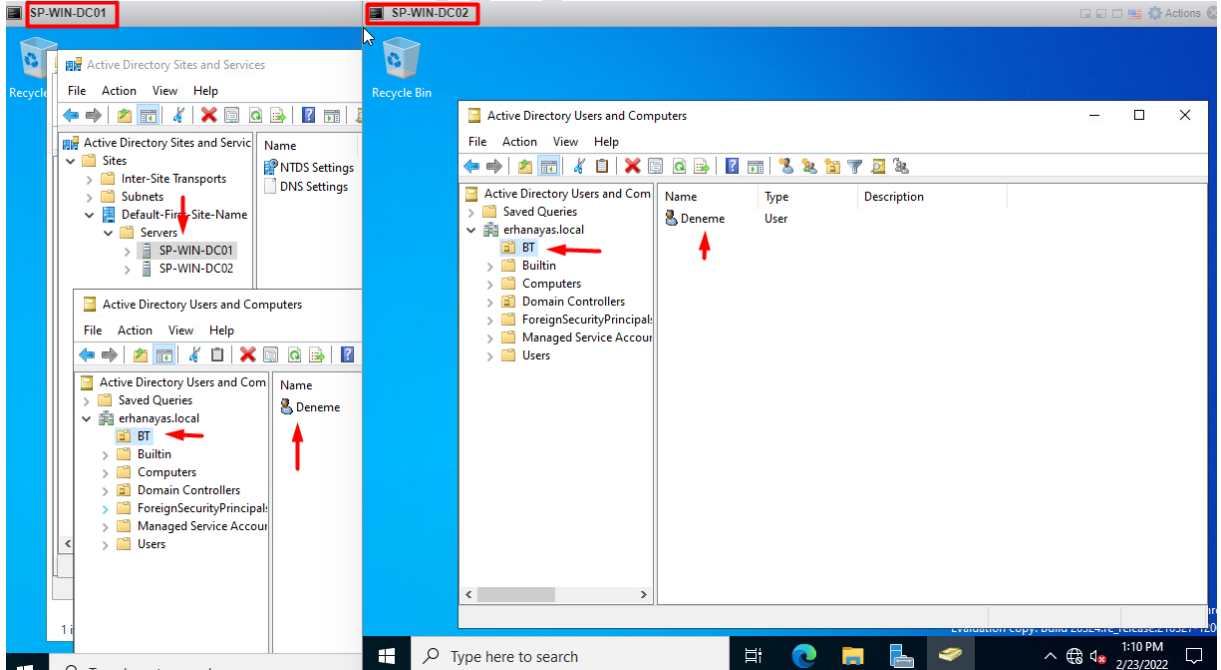
Cancel

Kurulum işlemi tamamlandıktan sonra sunucu yeniden başlayacaktır.

www.erhanayas.com



Kurulum sorunsuz olarak tamamlanmıştır.



www.erhanayas.com